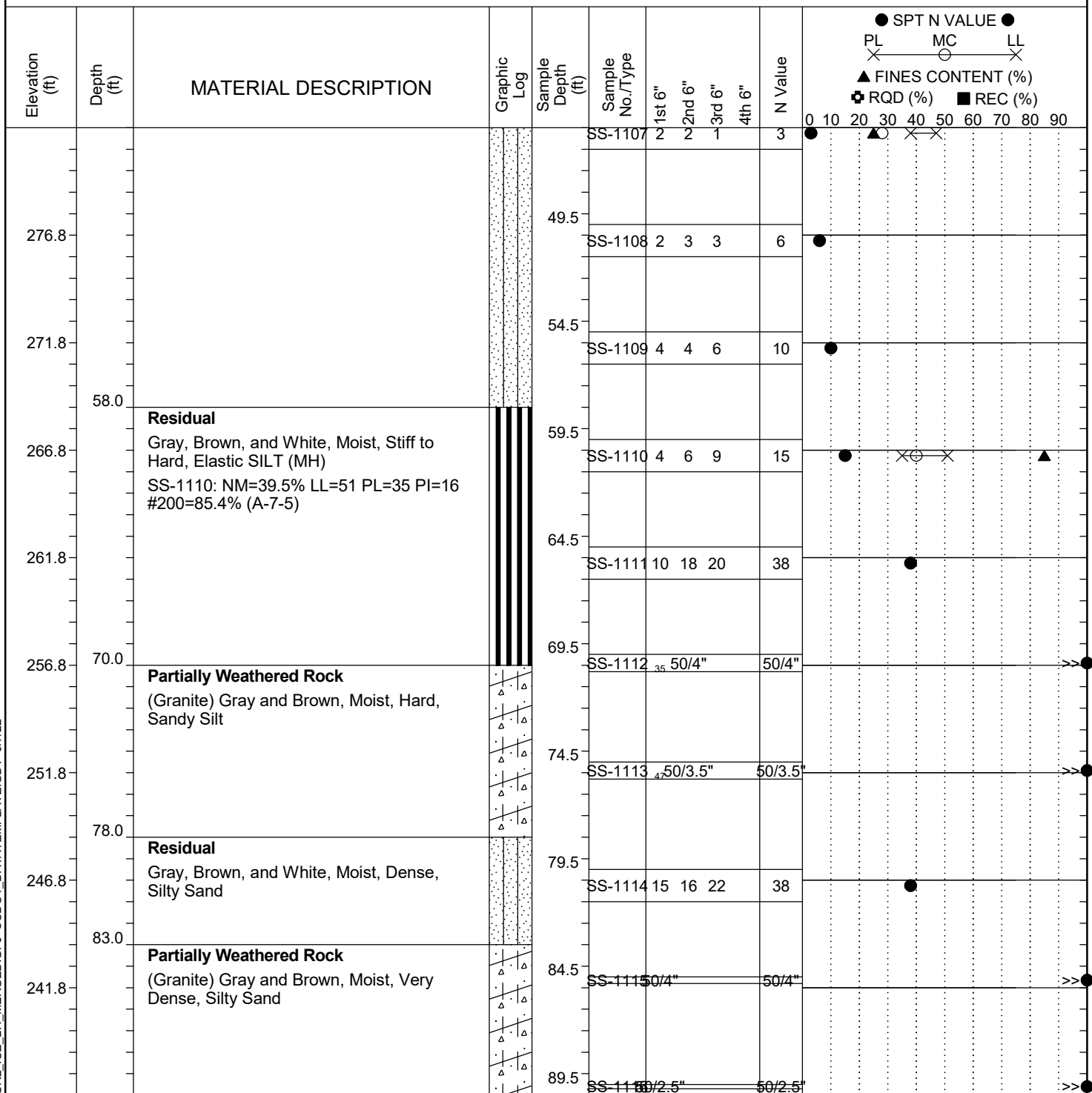


Project ID:	P039719	County:	Richland	Boring No.:	G-120
Site Description:	Carolina Crossroads Phase 2			Route:	Broad River Rd.
Eng./Geo.:	M. Akland	Boring Location:	613+00	Offset:	38 RT
Elev.:	326.8 ft	Latitude:	34.03963386	Longitude:	-81.09410131
Total Depth:	94.6 ft	Soil Depth:	94.6 ft	Date Started:	3/24/2022
Core Depth:	N/A ft	Date Completed:	3/24/2022		
Bore Hole Diameter (in):	2.25	Sampler Configuration		Liner Required:	Y (N)
Drill Machine:	D-50 #439	Drill Method:	RW	Hammer Type:	Automatic
Core Size:	N/A	Driller:	P. Mattis	Energy Ratio:	90.8%
		Groundwater:	TOB	4.3 ft	24HR FIAD


LEGEND
Continued Next Page

SAMPLER TYPE		DRILLING METHOD	
SS - Split Spoon	NQ - Rock Core, 1-7/8"	HSA - Hollow Stem Auger	RW - Rotary Wash
UD - Undisturbed Sample	CU - Cuttings	CFA - Continuous Flight Augers	RC - Rock Core
AWG - Rock Core, 1-1/8"	CT - Continuous Tube	DC - Driving Casing	